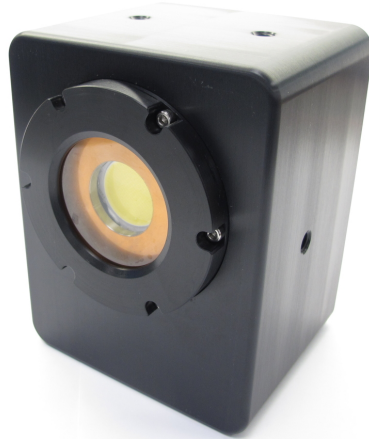


## Applications

- ROV & Manned Submersible Illumination

# OE11-301 / Sealed 301



## LED Underwater Floodlight

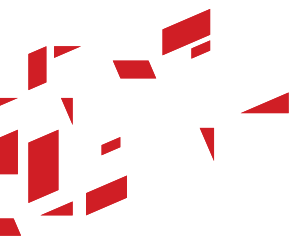
- 10000 Lumen Output
- 90° Beam Coverage
- 6000msw Depth Rating

The SeaLED 301 is a compact and rugged underwater LED floodlight lamp, designed specifically for ROV and manned submersible deployment applications.

The lamp is fitted with a high-density LED array, producing a broad and even beam of cool white light with a minimum measured illumination of 10,000 lumens. The SeaLED 301 is the perfect tool for the demanding requirements of underwater video tasks where accurate colour replication is essential.

The SeaLED 301 underwater LED floodlight lamp has a dimmable feature and a wide (90°) beam angle. The SeaLED 301 utilises a robust 6000msw hard anodised aluminium alloy housing.

For further information, email  
[camera.sales.uk@imenco.com](mailto:camera.sales.uk@imenco.com)



## Applications

- ROV & Manned Submersible Illumination

# OE11-301 / Sealed 301

## Technical Specifications

Electrical	
Lighting	LED Floodlight lamp
Total Luminous Output	10,000 Lumens (typical)
Illuminance @ 1 metre	3400 Lux
Beam Angle	90 Deg
Colour Temperature	5700K nominal (various colour temperatures available on request)
LED Life	>50,000 hours if adequately cooled
Power Input	24Vdc ( $\pm 2$ Vdc) (24v@1A)
Current (Max)	2.4A
Dimming	0-10 VDC (0-100%)
Mechanical	
Dimensions	Width: 103mm Depth: 86.5mm (excl. connector) Height: 132mm
Weight	In air: 3.2Kg In water: 2.1Kg
Shipping Weight	2.5Kg (estimate)
Housing Material	Hard Anodised Alloy 6082-T6
Connector	Subcon MCBH3M connector (other connector options are available) Pin 1: 0V Pin 2: 24VDC Pin3: 0-10V dimming control
Connector Position	Mounted on rear of housing
Mounting Options	M8x1.25 mounting holes in top and sides
Environmental	
Operating Depth	6000 msw
Temperature	Operating: -5°C to 40°C (In Water) Storage: -20°C to 60°C
Shock	30G peak acceleration, 25ms half sine duration, on all three axes
Vibration	10G, from 20 to 150HZ on all three axes
Electro-Magnetic Compatibility	BS EN 61000-6-3 2007 Emission and BS EN 61000-6-1 2007 Immunity

oe11301\_Datasheet\_Rev.D

For further information, email  
[camera.sales.uk@imenco.com](mailto:camera.sales.uk@imenco.com)

