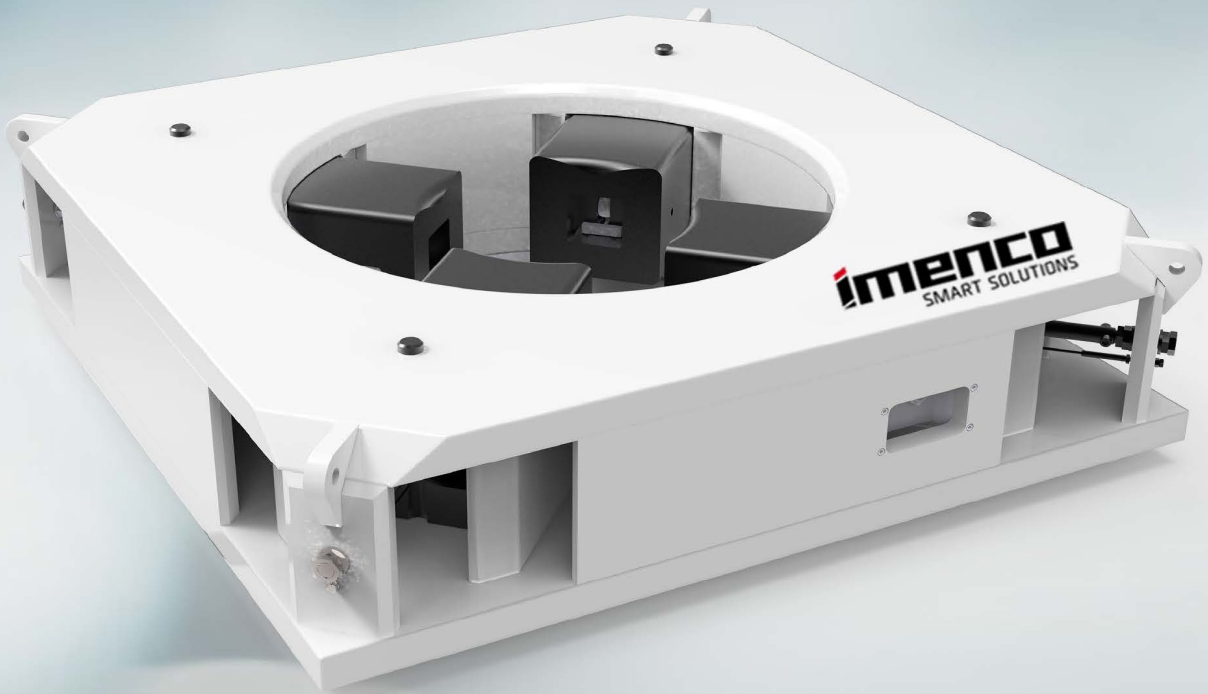


Riser Spider



Load off the riser string
and BOP while the riser
string is either run or
retrieved

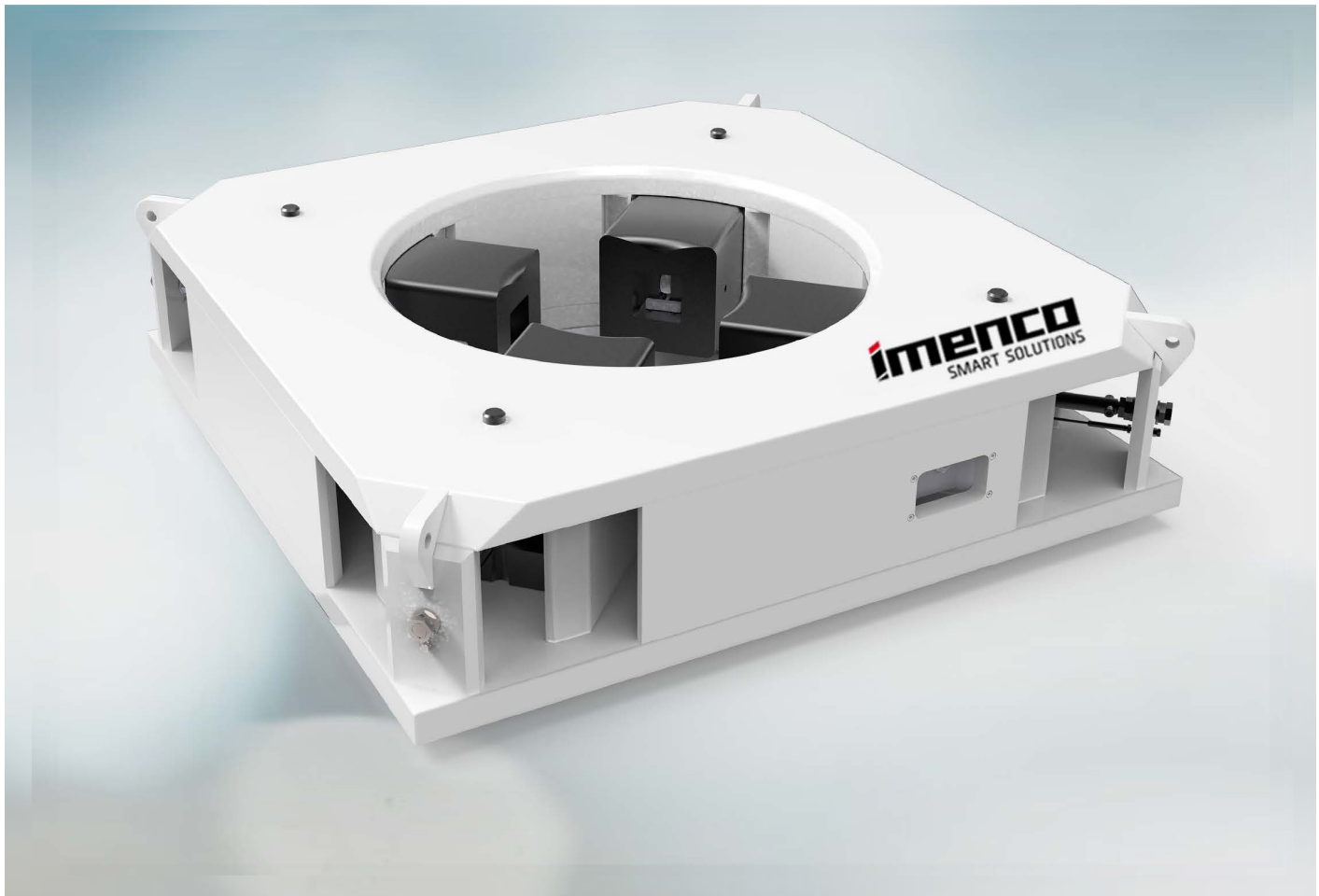
The Riser Spider is used to take the load off the riser string and BOP while the riser string is either run or retrieved. The Riser Spider is designed for the RCK riser and is certified for 500 t load

For further information, email
commercial@imenco.com

Riser Spider

Technical Information

- Maximum load rating: 500mT
- Design temp: -20°C to +50°C
- Working pressure: 210 bar
- Approved according to DNV/OS/E101 Drilling Plant
- Custom design possible



MO101897

For further information, email
commercial@imenco.com