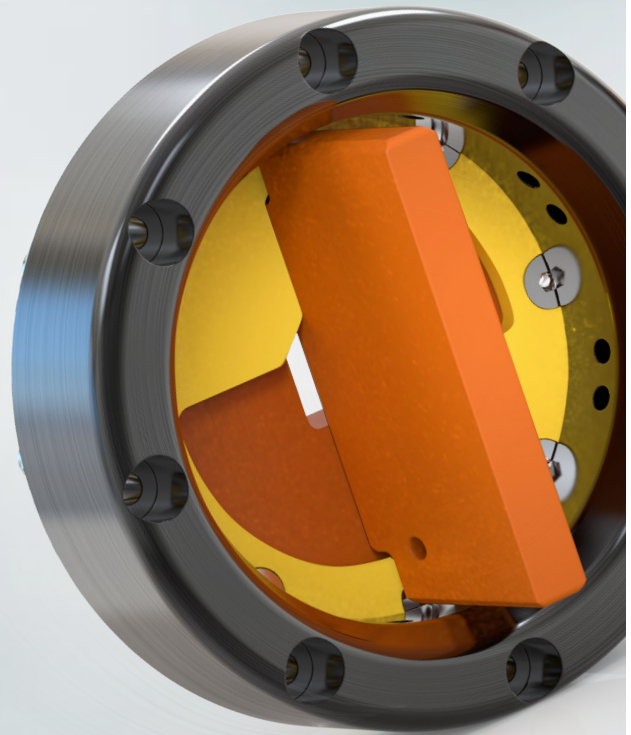


ROV Switch



The ROV Switch is a panel mounted ROV handle that is used as an actuator on standard valves

The ROV Switch is used for a variety of applications and valves depending upon our clients needs. The ROV Switch is designed for panel mounting and can be delivered with several sizes and types of valves by use of an adapter.

The ROV Switch is designed for use with standard ball valve or can be delivered with several multi way combinations/directional valves. The ROV Switch is a common component that Imenco has used on several ROV panels with different configurations of valves.

ROV Switch

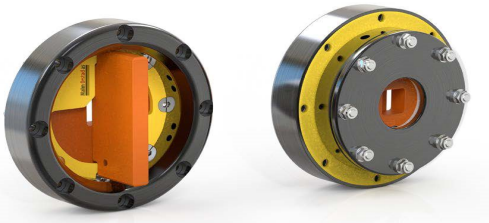
The ROV Switch is designed for panel mounting and can be delivered with several sizes and types of valves by use of an adapter. The ROV Switch is designed for use with standard ball valve or can be delivered with several multi way combinations/directional valves. The ROV Switch is a common component that Imenco has used on several ROV panels with different configurations of valves.

Advantages

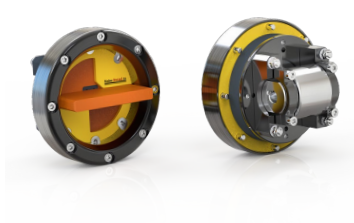
- Easily adapted to customer`s requirements by use of standard components
- Field proven components/solution
- Imenco`s ROV Switch avoid that torque is transferred to the valve stem

Technical Information

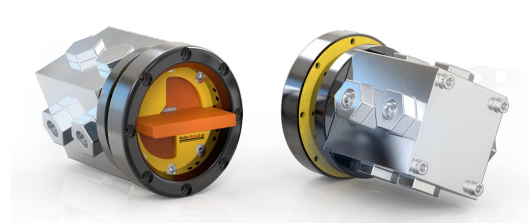
- Can be fitted for 4/3 valves, dual ball valves or single ball valves
- Material: Aluminum, stainless steel, PEHD (others if required)
- 90° operation with 3 or 2 steps for easy ROV and diver operations



ROV Switch, ROVS



ROV Switch Single Ball Valve, ROVSSB



ROV Switch Multi Ball Valve, ROVSMB