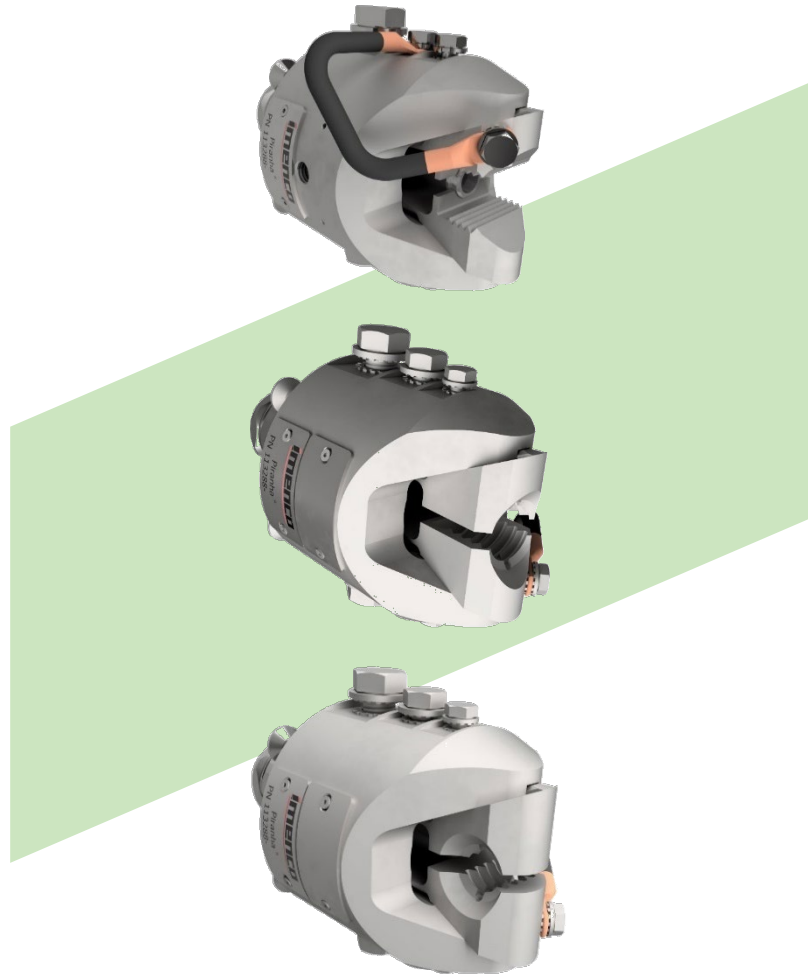
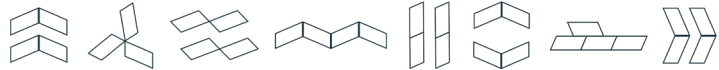


# RETROFIT ANODE PIRANHA® S CLAMP



“The Piranha® S range is intended for mounting to plates and/or rods. Piranha® S is equipped with a range of different jaws and offers flexibility to the interfacing process.”



### Intelligence built in

The main benefits of choosing a IMENCO Retrofit Anode Clamp are the ease of installation and flexible use. The clamp is guided into place by a ROV and tensioned with a torque tool to ensure a good Connection.

Most subsea structures and components have some sort of plate or bar as part of their design. This makes the Piranha S<sup>®</sup> Clamp the most versatile IMENCO Retrofit Anode Clamp for any structural element.

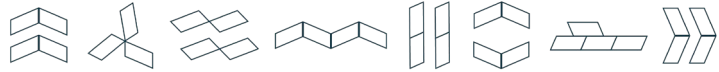
Anodes may be attached directly to the clamp, or by a bonding cable to an anode sled/anode bank.

### Features

- Active scanning sonar: 360 degree horizontal
- -10° to +60° degrees vertical Wide band frequency range
- Split beam transducer technology Compact, robust design
- Modular system with versatile configuration Remote operation and data acquisition Flexible scanning regime to match risk profile Redundant electronics
- Developed according to DNV RP A203 Qualified according to API 17F

### Advantages

- Active Acoustics (SONAR) reduces risk by early identification
- Large coverage area means cost effective; less units needed Machine trained system to avoid false alarms
- Precise leak location to isolate the problem faster
- Leak rate estimate to determine severity
- Delivery of leak rate data to know if actions have isolated leak
- Surveillance to know the risks in your field, so they can be managed
- Performs regulatory required mapping function (Norway) simultaneously with detection, reducing decision time



# RETROFIT ANODE

## PIRANHA® S CLAMP

The Piranha® S clamp is primarily composed of the housing, and the jaw. The housing design is suitable across the entire 5-35mm range. The jaw size is selected on a project-specific basis as per the below table.

Clamp Type	Plate Thickness (mm)	Clamp Dimensions (mm)							Weight
		A	B	C	∅D	E	F	G	
Piranha® S	5-10 mm	75	20	125	115	4-11	37	46	8 kg
Piranha® S	10-15 mm	75	20	125	115	9-16	37	46	8 kg
Piranha® S	15-20 mm	75	20	125	115	14-21	37	46	7,9 Kg
Piranha® S	20-25 mm	75	20	125	115	19-26	37	46	7,9 Kg
Piranha® S	25-30 mm	75	20	125	115	24-31	37	46	7,8 Kg
Piranha® S	30-35 mm	75	20	125	115	29-36	37	46	7,8 Kg

Clamp Type	Axial Rod	A	B	C	∅D	E	F	G	Weight
Piranha® S	13-18 mm	75	20	125	115	12-19	37	46	8 Kg
Piranha® S	17-22 mm	75	20	125	115	16-23	37	46	8 Kg
Piranha® S	22-26 mm	75	20	125	115	21-27	37	46	8 Kg

Clamp Type	Radial Rod	A	B	C	∅D	E	F	G	Weight
Piranha® S	13-18 mm	75	20	125	115	12-19	37	46	8 Kg
Piranha® S	22-26 mm	75	20	125	115	21-27	37	46	8 Kg

