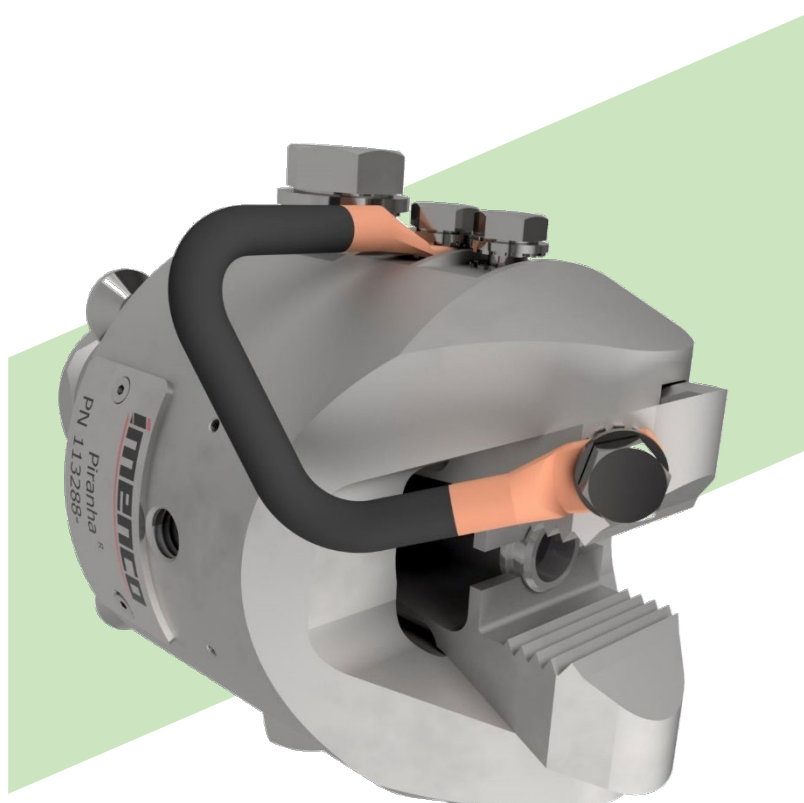
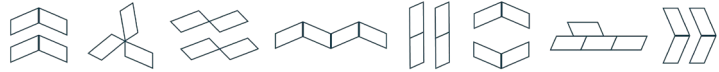


# RETROFIT ANODE PIRANHA<sup>®</sup> M CLAMP



**“The Piranha<sup>®</sup> M is intended for mounting to plates and round bar/pipe on subsea structures. It can be equipped with a range of different jaw sizes, suitable for plate thicknesses and bar diameters from 35mm up to 55mm.”**



**Intelligence built in**

The main benefits of choosing an Imenco Piranha® Clamp are ease of installation, flexible sizing, and proven long-term integrity.

The clamp is guided into place by ROV and tensioned with an Imenco Clamp Installation Tool (ICIT) to ensure a good connection.

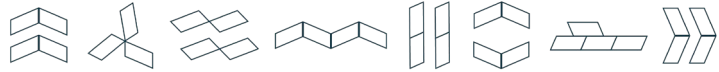
Most subsea structures and components have some sort of plate as part of its design. This makes the Piranha® M Plate Clamp the most versatile IMENCO Retrofit Anode Clamp. Anodes may be attached directly to the clamp, or by a bonding cable to an anode sled.

**Features**

- Active scanning sonar: 360 degree horizontal
- -10° to +60° degrees vertical Wide band frequency range
- Split beam transducer technology Compact, robust design
- Modular system with versatile configuration Remote operation and data acquisition Flexible scanning regime to match risk profile Redundant electronics
- Developed according to DNV RP A203 Qualified according to API 17F

**Advantages**

- Active Acoustics (SONAR) reduces risk by early identification
- Large coverage area means cost effective; less units needed Machine trained system to avoid false alarms
- Precise leak location to isolate the problem faster
- Leak rate estimate to determine severity
- Delivery of leak rate data to know if actions have isolated leak
- Surveillance to know the risks in your field, so they can be managed
- Performs regulatory required mapping function (Norway) simultaneously with detection, reducing decision time



# RETROFIT ANODE

## PIRANHA® M CLAMP

The Piranha® M clamp is primarily composed of the housing, and the jaw. The housing design is suitable across the entire 35-55mm range. The jaw size is selected on a project-specific basis as per the below table.

Clamp Type	Plate/Round Bar Dim (mm)	Clamp Dimensions (mm)							
		A	B	C	øD	E	F	G	Weight
Piranha® M	35-40 mm	75	20	125	115	34-39	37	46	8,9 kg
Piranha® M	40-45 mm	75	20	125	115	39-44	37	46	8,8 kg
Piranha® M	45-50 mm	75	20	125	115	44-49	37	46	8,8 kg
Piranha® M	50-55 mm	75	20	125	115	49-54	37	46	8,7 kg

